

TRAINING DIGEST

March 2024



UPCOMING WEBINARS

Effortless Attendance &
Messaging
3/19/24

[Register Here!](#)

New Provider
3/21/24

[Register Here!](#)

Spring has (almost) sprung!

And we are here for it. Birds are chirping, snow is melting, camp registration is in full swing, and the sun has re-appeared (*in Ann Arbor, MI at least!*)

Summer will be here before we know it, and we're ready to help you turn March into a successful proactive month for you and your team. Let us help you get comfortable with our platform and prepare your camp staff and volunteers for a memorable summer ahead.

Let's blow the winter blues away and dive into some learning!

WHAT'S NEW

Pre-Camp Prepping

Summer camp season is quickly approaching! While the excitement of welcoming new campers and embarking on adventures build, it's crucial to ensure your staff is fully prepared to create a safe, fun, and enriching experience for everyone.

Here are 3 best practices to get your staff primed for an incredible season:



DocNetwork University

Have you checked out our online courses?

- [Imports 101](#)
- [Introduction to Reporting](#)
- *and many more!!!*

[Enroll for FREE today!](#)



Pre-Season Training

Dedicate time before camp begins for comprehensive training sessions. Cover policies, safety procedures, emergency protocols, camper management strategies, incident tracking, and effective communication techniques. Need training on CampDoc? **We've got you covered!**



Fostering Teamwork & Community

Your staff is the backbone of your camp. Encourage collaboration and create opportunities for team-building activities, such as ice breaker games, group problem-solving tasks, or even organizing social events to build positive relationships and a strong sense of community.



Role-Playing & Scenario-Building

Go beyond theory by incorporating practical exercises. Conduct role-playing scenarios to prepare staff for various situations, such as handling camper conflicts, providing first aid, and managing challenging behaviors. This hands-on approach allows them to practice their skills in a safe environment and gain valuable problem-solving experience.

NEW



TRAINING SERVICES

Real-talk.

We have nothing but love for our monthly webinars. And based on your feedback, you seem to like them, too!

But sometimes you want a little extra training, specific to your team's needs, in an intimate setting, with more time for Q&A.

That's where the *DocNetwork Training Team* comes in!

Visit [DocNetwork Training Services](#) for details and pricing information on our tailored learning experiences! Or share this [Training Services Guide](#) with your program decision-makers!

Q:

What is **educational, tailored** to your needs, **relevant**, and going to help you gain **confidence** in using our platform?



A:

DocNetwork Training Services!!!

UPCOMING CONFERENCES

We had SUCH a great time at ACA National that we're going to two more ACA Conferences!

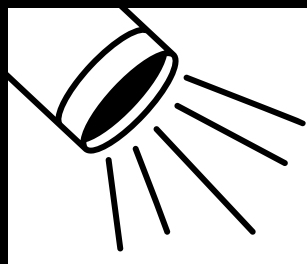


Stop by our booth to meet the CampDoc team!

ACA Tri-State
March 12-14

ACA New England
March 21-23

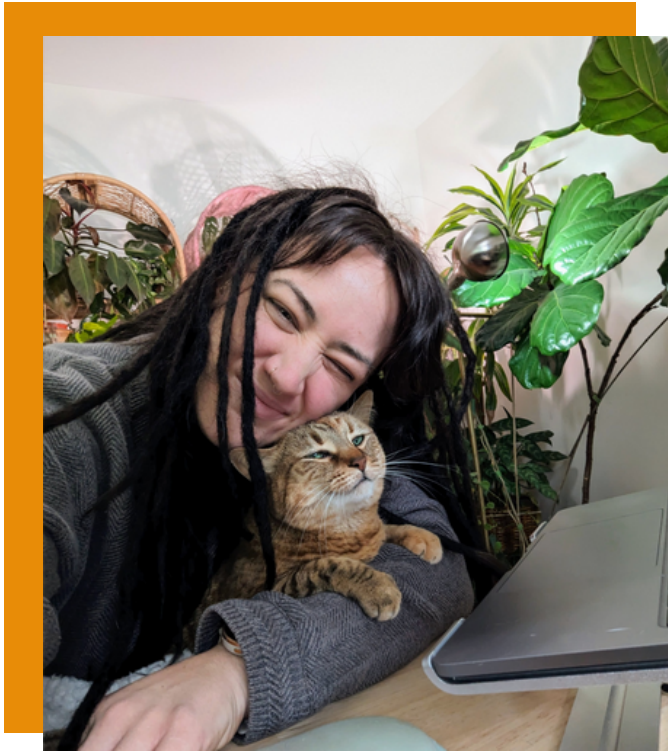




EMPLOYEE SPOTLIGHT

This month, meet our **Senior Implementation Specialist** and plant whisperer...

EVE WOOD



An embodiment of sunshine, Eve brings a wealth of experience, joy, and creativity to DocNetwork. Representing the **Green** pod, she works tirelessly to set up and maintain CampDoc / SchoolDoc electronic health forms and registration for clients, ensuring that each **account build** aligns with the needs of each organization. In her Senior role, she has also embraced additional leadership and training opportunities, and played a major role in the company's transition to **BugHerd!**

Before DocNetwork, Eve provided support to pets and their parents in veterinary settings, then transitioned to **nurturing** houseplants in office environments. Having always had a knack for creating thriving environments, she now channels her nurturing spirit into supporting organizations and their families.

A firm believer in DocNetwork's core value of **Wonder**, Eve exemplifies proactive and innovative thinking, always striving to better serve our clients and create a sustainable, enjoyable working environment. "I believe our company is as successful as it is because our employees embrace this core value."

Outside of work, you can likely find Eve at an **estate sale** or **thrift** store, where she finds joy in thrifting old interior design books and vintage

Architectural Digest magazines, or scoping out items for friends and family. Always seeking new challenges, she is passionate about learning new **crafts**, from sewing to beadwork to creating miniature rooms & dollhouses.

Eve is a beacon of creativity, joy, and positivity, and we are so lucky to have her on the DocNetwork team!



ORGANIZATION SPOTLIGHT



Earthplace

Nestled on a sprawling 62-acre wildlife sanctuary, Earthplace is a beacon of environmental education and wildlife conservation. This non-profit organization offers a myriad of experiences, including trails, a pond, a stream, fields, playgrounds, and the Connecticut Birds of Prey exhibit.

At the heart of Earthplace is its preschool program, where children spend ample time outdoors, immersing themselves in nature and environmental learning. Weekly visits from animals at Animal Hall enrich their understanding of wildlife conservation. The camp programs at Earthplace serve as an extension of the preschool, offering school-age children an opportunity to delve deeper into the wonders of the natural world.

A cornerstone of Earthplace's impact is Harbor Watch, dedicated to improving water quality and ecosystem health in Connecticut. Through field and lab research, collaboration with municipal partners, and educational initiatives,

Harbor Watch plays a vital role in environmental stewardship.

Earthplace is also home to Animal Hall and the Connecticut Birds of Prey, providing a safe haven for approximately 50 animals that are unable to survive in the wild due to injury or domestication. Here, these animals are cared for and observed, contributing to valuable research and education.

The sanctuary is open to the public, inviting everyone to explore and learn about nature conservation. Proceeds from admission fees and donations support the care of animals and maintenance of the grounds, ensuring that Earthplace remains a beacon of environmental education and wildlife preservation for generations to come.

To learn more, check out: <https://earthplace.org/>

We'd love to feature your organization in an upcoming edition!

Please fill out this brief questionnaire to get started, and we will be in touch!

